

A small sample of some of the stamped parts produced at the Elyria Spring and Specialty Inc. in Elyria, Ohio.

With complete in-house tool and die facilities, Elyria Spring and Specialty Inc. can provide design and prototyping services to its stamping customers. The company utilizes several small tonnage Minster presses and its newest press -- an Amada TP60-EX press.

"There are a lot of great features on the Amada press," said Lead Punch Press Operator Chris Bodnar. "We love the adjustable ram, the digital readout and the die protection is great also. But I would say the best thing about the press is that it just runs and runs without any major problems."

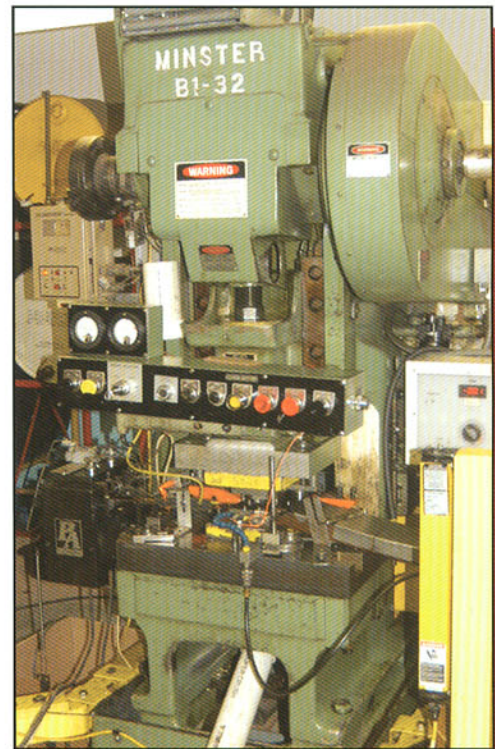
One of the more complex parts being made on the Amada press is a tubular faucet sleeve.

"The part is formed all the way around and then interlocked," Bodnar said. "It's a difficult part and with the Amada press we are able to get at the die very easily and

troubleshoot any situation. Set-up is great. We can get dies in and out of the machine without a lot of problems."

"We supply competitive parts to our customers on time, and that's our No. 1 goal," Allen added. "With the Amada press we have also been able to increase our capacity and work on larger jobs."

Elyria Spring and Specialty Inc. has six presses ranging from 12 to 60 tons. For more information about the products and services of Elyria Spring and Specialty Inc., visit the company online at [www.elyriaspring.com](http://www.elyriaspring.com) or call 440-323-5502.



A Minster B1-32 is one of several smaller Minster presses in production at Elyria Spring and Specialty Inc.